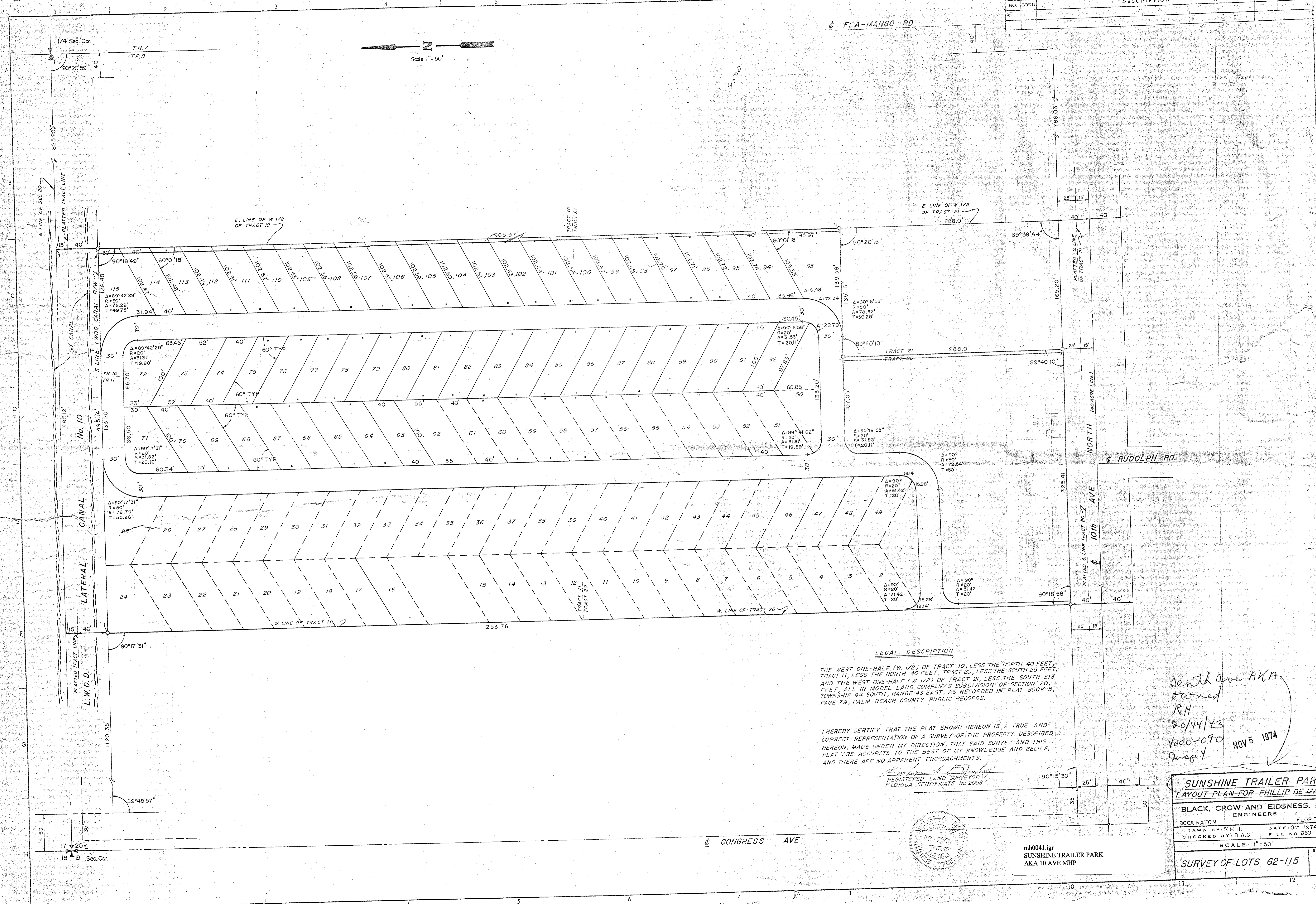
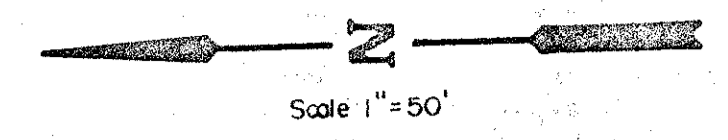


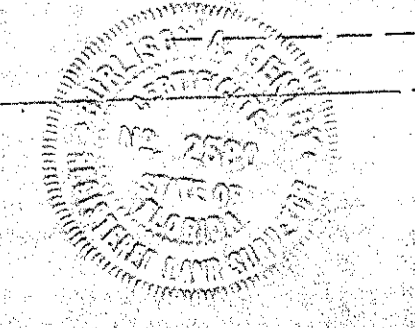
REVISIONS		DATE	APPROVED
NO.	CORD		



LEGAL DESCRIPTION
 THE WEST ONE-HALF (W. 1/2) OF TRACT 10, LESS THE NORTH 40 FEET, TRACT 11, LESS THE NORTH 40 FEET, TRACT 20, LESS THE SOUTH 25 FEET, AND THE WEST ONE-HALF (W. 1/2) OF TRACT 21, LESS THE SOUTH 313 FEET, ALL IN MODEL LAND COMPANY'S SUBDIVISION OF SECTION 20, TOWNSHIP 44 SOUTH, RANGE 43 EAST, AS RECORDED IN PLAT BOOK 5, PAGE 79, PALM BEACH COUNTY PUBLIC RECORDS.

I HEREBY CERTIFY THAT THE PLAT SHOWN HEREON IS A TRUE AND CORRECT REPRESENTATION OF A SURVEY OF THE PROPERTY DESCRIBED HEREON, MADE UNDER MY DIRECTION, THAT SAID SURVEY AND THIS PLAT ARE ACCURATE TO THE BEST OF MY KNOWLEDGE AND BELIEF, AND THERE ARE NO APPARENT ENCROACHMENTS.

Richard A. ...
 REGISTERED LAND SURVEYOR
 FLORIDA CERTIFICATE No. 2058



mh0041.igr
 SUNSHINE TRAILER PARK
 AKA 10 AVE MHP

*Senth Ave AKA
 owned
 RH
 20/44/43
 4000-090
 Aug 4*

NOV 5 1974

SUNSHINE TRAILER PARK
 LAYOUT PLAN FOR PHILLIP DE MASSO

BLACK, CROW AND EIDSNES, INC.
 ENGINEERS

BOCA RATON, FLORIDA

DRAWN BY: R.H.H. DATE: Oct. 1974
 CHECKED BY: B.A.G. FILE NO. 050-74-66

SCALE: 1"=50'

SURVEY OF LOTS 62-115

SHEET NO. 12